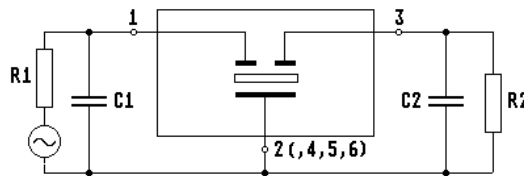
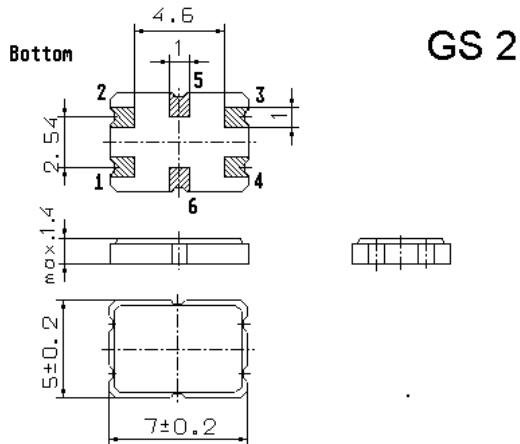


Specification for monolithic crystal filter:

MQF 29.25 - 1600/01

1. General

1.1. Case:



- | | |
|-----------------------------------|---------------------|
| 1.2. Type name: | MQF 29.25-1600/01 |
| 1.3. Number of poles: | 2, fundamental mode |
| 1.4. Operating temperature range: | -40°C to +85°C |
| 1.5. Storage temperature range: | -45°C to +85°C |

2. Electric values

- | | |
|---|-------------------------------|
| 2.1. Nominal centre frequency fo: | 29.25 MHz |
| 2.2. Pass band | |
| 2.2.1. Bandwidth between 3 dB - frequencies: | > ± 8.0 kHz |
| 2.2.2. Ripple: | < 1.0 dB at fo ± 5.0 kHz |
| 2.2.3. Insertion loss:
(measured on smallest attenuation in pass band) | < 3.0 dB |
| 2.3. Stop band | |
| 2.3.1. fo ± 30 kHz | > 18 dB |
| 2.3.2. Alternate attenuation | > 45 dB (except spurious) |
| 2.4. Terminating impedance (input and output): | 700 Ω // 5.0 pF |
| 2.5. Input power level for reference measurement: | -5 dBm |
| 2.5.1. Maximum input power level without destruction: | +15 dBm |
| 3. Marking on the case: | M2925A1
yyww |
| 4. Environment conditions: | according to Telefilter CF001 |

Edited by: _____ date: _____ name: _____