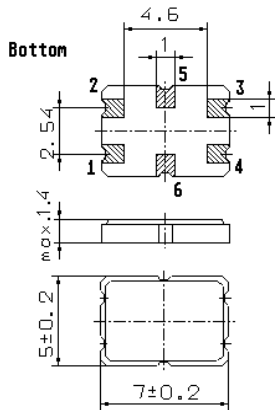


Specification for monolithic crystal filter:

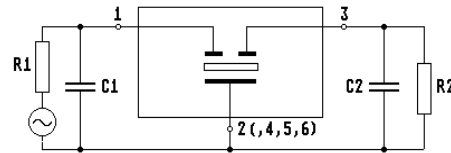
MQF 32.768-0800/01

1. General

1.1. Package:



GS 2



- 1.2. Type name: MQF 32.768-0800/01
- 1.3. Number of poles: 2
- 1.4. Operating temperature range: -20°C to +85°C
- 1.5. Storage temperature range: -55°C to +125°C

2. Electric values

- 2.1. Nominal centre frequency fo: 32.768 MHz
- 2.2. **Pass band**
 - 2.2.1. Bandwidth between 3 dB - frequencies: $\pm > 4$ kHz
 - 2.2.2. Ripple: < 1.0 dB at $f_o \pm 2.0$ kHz
 - 2.2.3. Insertion loss: < 2.0 dB
(measured on smallest attenuation in pass band)
- 2.3. **Stop band**
 - 2.3.1. $f_o \pm 60$ kHz: > 40 dB
 - 2.3.2. alternate attenuation

0.06...32.708MHz	> 40 dB
32.828...100 MHz	> 40 dB (except spurious)
- 2.4. Terminating impedance R/C (input and output): $670 \Omega // 6$ pF
- 2.5. Input level working/non-damaged: -10 / 0 dBm
- 3. Marking on the case: M32A1
tft date code
- 4. Environment conditions: Corresponding to Telefilter CF001
- 5. Filters are Pb-free and 2002 /95 / EC RoHS compliant

Edited by: _____ date: _____ name: _____