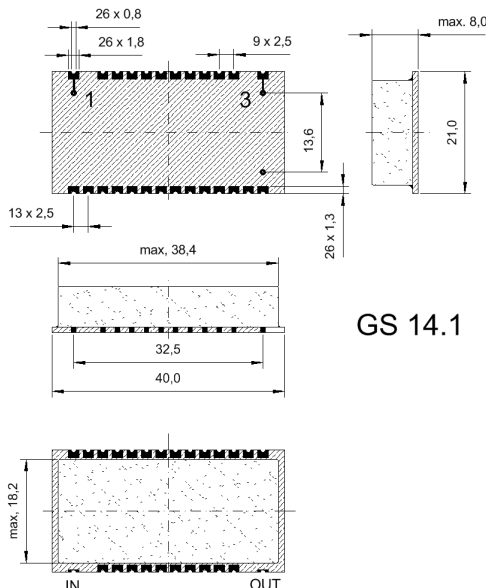


Specification for monolithic crystal filter:

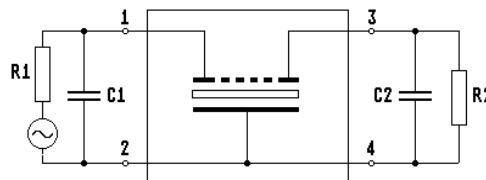
**MQF 35.25 - 5000/08**

**1. General**

**1.1. Package:**



GS 14.1



- 1.2. Type name: MQF 35.25-5000/08
- 1.3. Number of poles: 6, fundamental
- 1.4. Operating temperature range: -20°C to +70°C
- 1.5. Storage temperature range: -45°C to +85°C

**2. Electric values**

- 2.1. Nominal centre frequency fo: 35.25 MHz
- 2.2. **Pass band**
  - 2.2.1. Centre frequency fc: 35.25 MHz ± 2.0 kHz
  - 2.2.2. Bandwidth between 3 dB - frequencies: > fc ± 25 kHz
  - 2.2.3. Ripple: < 1.5 dB at fc ± 17.5 kHz
  - 2.2.4. Insertion loss: < 5.0 dB  
( measured on smallest attenuation in pass band )
- 2.3. **Stop band**
  - 2.3.1. fc ± 100 kHz: > 70 dB
  - 2.3.2. Alternate attenuation: fo ± 910 kHz > 60 dB
  - 2.3.3. Spurious responses: > 60 dB
- 2.4. Terminating impedance ( input and output ): 50 Ω // 0 pF
- 2.5. Maximum Input level (working/non-damaged): 0 / +10 dBm
- 3. Marking on the package: manufacturer, date code  
MQF 35.25-5000/08
- 4. Environment conditions: Corresponding to Telefilter CF001

Edited by: \_\_\_\_\_ date: \_\_\_\_\_ name: \_\_\_\_\_