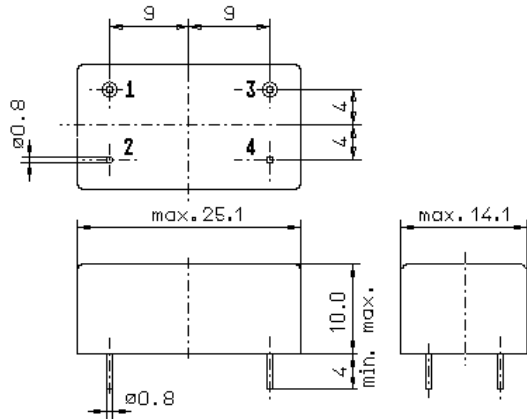


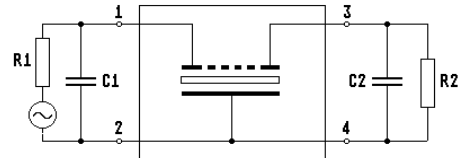
Specification for monolithic crystal filter: **MQF 40.68-5000/02**

1. General

1.1. Package:



GM3



- 1.2. Type name: MQF 40.68-5000/02
- 1.3. Number of poles: 4, fundamental mode
- 1.4. Operating temperature range: -20°C to +70°C
- 1.5. Storage temperature range: -45°C to +85°C

2. Electric values

- 2.1. Nominal centre frequency fo: 40.68 MHz
- 2.2. **Pass band**
 - 2.2.1. Centre frequency fc: 40.68 MHz ± 1.5 kHz
 - 2.2.2. Bandwidth between 3 dB - frequencies: > fo ± 25 kHz
 - 2.2.3. Ripple: < 1.0 dB peak to peak
 - 2.2.4. Insertion loss: < 2.5 dB
(measured on smallest attenuation in pass band)
- 2.3. **Stop band**
 - 2.3.1. fo ± 190 kHz > 60 dB (except spurious)
 - 2.3.2. Alternate attenuation > 80 dB (except spurious)
- 2.4. Nomial input power level: 0 dBm
 - 2.4.1. Maximal input power level: +15 dBm
- 2.5. Terminating impedance R//C (input and output): 100 Ω // 0 pF
- 2.6. Inband Intermodulation IP3 (with test tones frequency at fo ± 1 kHz and input power of 0 dBm) > +33 dBm (IMD > 66 dB)
- 3. Marking on the case: manufacturer, date code
MQF 40.68-5000/02
- 4. Environment conditions: Corresponding to Telefilter CF001

Edited by: _____ date: _____ name: _____