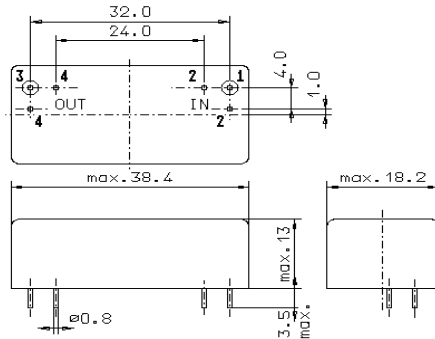


Specification for monolithic crystal filter

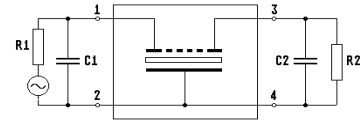
MQF 70.7-1200/03

1. General

1.1. Case:



GM17



- | | |
|-----------------------------------|-----------------------------|
| 1.2. Type name: | MQF 70.7-1200/03 |
| 1.3. Number of poles: | 6, 3 rd overtone |
| 1.4. Operating temperature range: | +20°C to +60°C |
| 1.5. Storage temperature range: | -20°C to +70°C |

2. Electric values

- | | |
|---|--|
| 2.1. Nominal centre frequency f_0 : | 70.7 MHz |
| 2.2. Pass band | |
| 2.2.1 Centre frequency f_c : | 70.7 MHz \pm 1500 Hz |
| 2.2.2. Bandwidth between 3 dB - frequencies: | 12 kHz \pm 300 Hz at 25°C |
| 2.2.3. Ripple: | < 2.0 dB at $f_c \pm 3.5$ kHz |
| 2.2.4. Insertion loss:
(measured on smallest attenuation in pass band) | < 5.0 dB |
| 2.3. Stop band | |
| 2.3.1. $f_c \pm 19$ kHz | > 60 dB |
| 2.3.2. Alternate attenuation | > 60 dB (except spurious) |
| 2.4. Terminating impedance (input and output): | 50 Ω // 0 pF |
| 2.5.1. Nominal Input power level | 0 dBm |
| 2.5.2. Maximum Input power level | + 10 dBm |
| 2.5.3 In band Intermodulation
test tones: | 3rd order intermodulation products: |
| fo +4 kHz / -4 kHz | IM at 70.712 MHz / 70.688 MHz > 60 dB |
| fo +4 kHz / +2 kHz | IM at 70.700 MHz > 50 dB |
| fo -4 kHz / -2 kHz | IM at 70.700 MHz > 50 dB |
| Input power level | -10 dBm |
| 3. Marking on the case: | OEM marking, year week
MQF 70.7-1200/03 |
| 4. Environment conditions: | Corresponding to Telefilter CF001 |

edited by: _____ date: _____ name: _____